

1

Uncompromised Sound

- POWERFUL SPEAKER OUTPUT
- AUDIOPHILE-GRADE TOROIDAL TRANSFORMER
- ALPS FILM TYPE VOLUME CONTROL

2

Redesigned Digital Stage

- NEW! ESS SABRE DAC
- NEW! APTX HD BLUETOOTH BUILT-IN
- NEW! ASYNCHRONOUS USB

3

A Design For Life

- FLOATING CHASSIS
- CLEAR CONNECTIONS
- EASY-TO-READ FRONT PANEL

Let Your Music Move You

The CXA61 is designed to bring you closer to the music you love. It's designed to put you right at the heart of your favourite recordings, telling you the story of every note in the most natural, most effortless, most detailed way imaginable. Analogue or digital, lo-fi or hi-res, CXA61 lets the music take you where you want to go.



roon
tested



Qualcomm
aptX™ HD



Hi-Res
AUDIO

60
WATTS

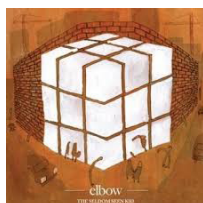
Demonstration Tracks

At Cambridge Audio we use our ears constantly, both as passionate music lovers and audio professionals looking for test examples. We test our products with all types of content and the following suggestions are our picks for a great demo experience for your customers.

1

MIRRORBALL by ELBOW

The Seldom Seen Kid (2008)



“Mirrorball” is a lesser known track from the album that saw Elbow firmly enter the big leagues. An ode to the first stages of falling in love, the CXA61 wrings every last drop of emotion from Guy Garvey’s lilting vocal line.

2

WATCHING THE DETECTIVES by ELVIS COSTELLO

My Aim is True (1977)



“Watching the Detectives” (which can now be found on re-issues of Elvis Costello’s 1977 debut album) is a riot of bass, keys and scratchy guitars. The CXA61 is perfect for the job of pulling all of the detail from the track without sacrificing the vibrancy or dynamic range of the original recording.

Great British Sound

What does ‘British Sound’ mean? To us it’s about removing any barriers that might distort or alter the original recording and not adding any of our own flavour. What you hear from our products is a pure and unfiltered ‘British’ sound – just as the artist intended.



1 Uncompromised Sound

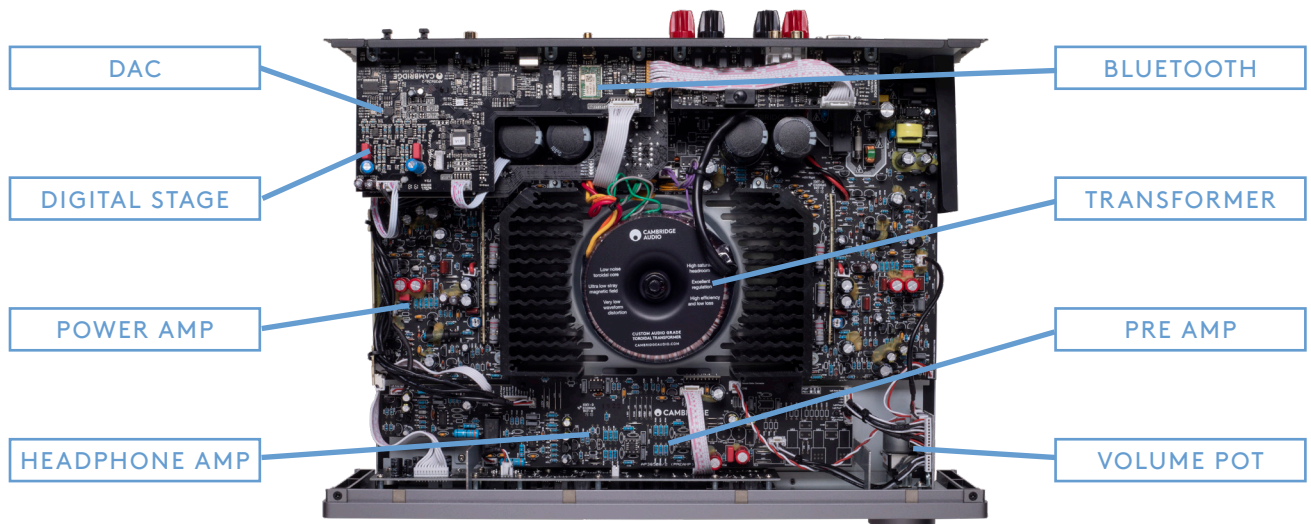
The CXA61 has undergone extensive tuning, receiving upgraded capacitors and op-amps. As a result it's a punchy and upfront listen, delivering your entire music collection with dynamism and excitement. It has the openness, detail and precision it needs to give you a complete audio picture, but this fidelity isn't at the expense of enjoyment. CXA61 hits hard, but with complete control - and, as a result, it has the drive and attack to make your music sound thrillingly alive.

POWERFUL SPEAKER OUTPUT

The CXA61 has huge power reserves and can be paired with a wide variety of speakers. It is able to drive low to high impedance drivers through both speaker outputs, 60 w into 8Ω and 90w into 4Ω. You can also enjoy two separate zones of musical output - such as your front room and kitchen - with two sets of speaker outputs and a dedicated subwoofer output.

ALPS FILM TYPE VOLUME CONTROL

Correct stereo reproduction and sonic accuracy across a variety of volumes can be an issue for lesser amplifiers. We've used an Alps film type volume pot which delivers accurate volume control and superb low level channel balance. This means that output is always perfectly controlled across both left and right channels at whatever volume level you're listening to.



AUDIOPHILE-GRADE TOROIDAL TRANSFORMER

Toroidal transformers have exceptionally low levels of electro-magnetic interference when compared to traditional transformer designs. The central placement of the CXA61's transformer ensures that components and circuitry can be placed out of the way of any stray interference therefore avoiding damaging hum and distortion.

2 Redesigned Digital Stage

In addition to its four RCA analogue inputs, the CXA61 is designed to work in perfect harmony with digital sources as a result of its redesigned digital stage. Any digital music soars to new heights, reveals new depths and can be enjoyed like never before.



NEW! ESS SABRE DAC

A Digital to Analogue Converter (or DAC for short) has a very important job in the signal chain. It reads the zeroes and ones from a digital signal and turns it into an analogue waveform, ready to be amplified to drive the speakers.

We chose the widely acclaimed ESS Sabre ES9010K2M chip for the CXA61 due to its ability to read digital files up to 32bit/384kHz and DSD 256, and its super-low jitter.

As a result, digital information coming into the CXA61 is precise, accurate and perfectly organised

NEW! ASYNCHRONOUS USB

As part of the digital overhaul, the CXA61 has been kitted out with an asynchronous USB connection just like its big brother, the CXA81. This connection makes it super easy to play high quality digital files from either a PC or Mac.

NEW! APTX HD BLUETOOTH BUILT-IN

For users who want convenient wireless connection to their system, CX amplifiers now feature an aptX HD Bluetooth receiver built in.

Bluetooth makes good sense from a convenience point of view. Offering a complete connection solution for all of your media and bypassing the often poor digital to analogue converters used in phones and laptops, it also allows you complete control from the comfort of your armchair.

CX amplifiers connect using aptX HD Bluetooth when available, offering CD-like quality playback at 24bit/48kHz. If your transmitting device doesn't offer aptX HD Bluetooth support then the receiver will automatically switch down to either aptX or standard Bluetooth bandwidth.

A Design For Life

Whilst a vast majority of the upgrades in CX Series 2 are internal, that doesn't mean there isn't plenty to talk about on the outside - it's not all about that fancy new paint job!

FLOATING CHASSIS

On it's own the CXA61 makes quite a statement with it's floating effect chassis. Stack it up with other components in the CX family and it becomes the centrepiece of a truly elegant hi-fi solution. Not only does the CXA61 look good, the sleek design encompasses a low resonance chassis that also enhances sonic performance.



CLEAR CONNECTIONS

Who else has struggled to read an input label while crouching over a piece of Hi-Fi equipment? As a clever touch, the rear connectors on all CX Series Hi-Fi components are labelled upside down as well as the correct way up.



EASY-TO-READ FRONT PANEL

With such a wide variety of inputs it's important to know what's going on at a glance. The CXA61's front panel let's you know exactly what's happening in a clear, discreet and stylish way.



In The Press

We believe in our products wholeheartedly but don't just take our word for it.

“A solid and classy piece of kit. Stereo imaging is impressive... the CXA61 is a real winner”

What Hi-Fi? Awards 2019 winner. Best Stereo Amplifier £400-£750

WHAT HI-FI, SEPTEMBER 2019

WHAT HI-FI?

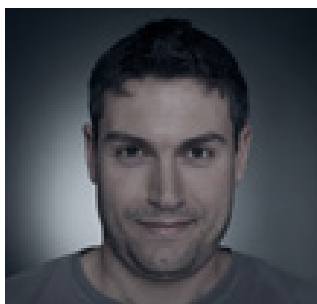


Cambridge Audio CXA61

September 2019

Inside Story

We're located in London SE1, right on the doorstep of some of the most creative, exciting developments in the music industry and our products are designed and engineered in-house. Outside work we're musicians, sound engineers and above all music lovers.



FRANCESCO BETTUCCI
ELECTRONICS ENGINEER

“The original CX amplifiers were excellent products for the price. Fantastic sounding too. Our job on Series 2 was to improve upon that.

My focus was on the digital stage. We greatly improved digital performance with a new ESS DAC and we updated the USB input to support very high resolution files, including DSD, which we couldn't do with CXA60 and CXA80. We then updated the Bluetooth by integrating it into the amplifier and adding support for aptX HD.

After this, we moved to sound tuning stage, which took almost as long as designing the new boards. We did many listening tests, swapping component after component. It's a long process to get to where you want.

The final result is the sum of many little refinements in many different areas of CXA.”

Stacking Up

	CXA60	CXA61	CXA80	CXA81
POWER OUTPUT (8 OHMS)	60W	60W	80W	80W
DAC	WOLFSON WM8740	ESS SABRE ES9010K2M	WOLFSON WM8740	ESS SABRE ES9016K2M
BLUETOOTH	APT X (OPTIONAL)	APT X HD INTEGRATED	APT X (OPTIONAL)	APT X HD INTEGRATED
RS232	NO	YES	NO	YES
TRIGGER IN/OUT	NO	YES	NO	YES

Technical Specification

POWER OUTPUT:	60W RMS into 8 Ohms, 90W RMS into 4 Ohms
DAC:	ESS Sabre ES9010K2M
FREQUENCY RESPONSE:	<5Hz- 60kHz +/-1dB
ANALOGUE AUDIO INPUTS:	4 x RCA, 1 x 3.5mm MP3 input (front panel)
DIGITAL AUDIO INPUTS:	1 x S/PDIF coaxial, 2 x TOSLINK optical, 1 x USB audio, Bluetooth (integrated)
COMPATIBILITY:	TOSLINK optical: 16/24bit 32-96kHz PCM only, S/PDIF coaxial: 16/24bit 32-192kHz PCM only, USB: audio profile 1.0/2.0 (default 2.0), up to 32bit 384kHz PCM, up to DSD256 or DoP256, Bluetooth: 4.2 A2DP/AVRCP supporting up to aptX HD (24bit 48kHz)
OUTPUTS:	Speakers A+B, 3.5mm Headphone, Preamp Output, Subwoofer Output
MAX POWER CONSUMPTION:	600W
STANDBY POWER CONSUMPTION:	<0.5W
DIMENSIONS	(H x W x D) 115 x 430 x 341mm (4.5 x 16.9 x 13.4")
WEIGHT:	8.3kg (18.3lbs)

Related Products

CXN (V2) NETWORK AUDIO STREAMER

Everyone loves the convenience of digital audio. Nobody enjoys the compromises digital audio playback sometimes involves. That's why the CXN (V2) is designed to provide the effortless accessibility of digital audio, but with the uncompromised sonic excellence of Cambridge Audio's 50-plus years of hi-fi experience. Ease of use meets quality of performance.



CXA81 INTEGRATED AMPLIFIER

How do you take an admired and successful integrated amplifier, one that's won respect and plaudits around the world, and make it even better? Well, if you're a Cambridge Audio engineer, you examine every aspect of the performance - and then you do everything you can to make it 'more'. More refined, more precise, more engrossing... more musical. CXA81: it's everything you loved about CXA80, but more so.

