



# CHORUS 615

## Product specification sheet

This loudspeaker is the cadet of the floorstanders in the Chorus 700 line and its slender design means it takes up a minimum amount of floor space. Despite its small size, the Chorus 615 two-and-a-half-way loudspeaker takes full advantage of its two 5" (13cm) speaker drivers, ideal for rooms from 160-215ft<sup>2</sup> (15-25m<sup>2</sup>).

New suspension material "PORON".  
Smoother sound.

5" (13cm) Polyglass midbass.  
High dynamic midrange, more bass.

5" (13cm) Polyglass woofer.  
High power handling.

Aerodynamic port.  
Low distortion



Restyling of the cabinet  
More contemporary design

New grille cloth design  
Better integration

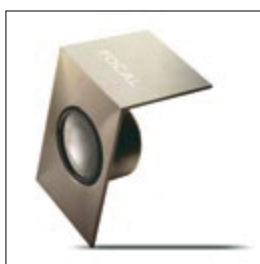
Solid MDF construction  
up to 1" (25mm) width.  
Non parallel inner wall structure.

OPC crossover.  
Perfect staging.  
Insulated Focal terminals.

### Key features

- Speakers designed and manufactured by Focal.
- Exceptional sound and quality for the price.

Chorus 615 in black only



Type	2 1/2 - way bass reflex floorstanding loudspeaker
Drivers	5" (13cm) Polyglass woofer 5" (13cm) Polyglass midbass 1" (25mm) TNV2 Al/Mg inverted dome tweeter
Frequency response (+/- 3dB)	52Hz - 28kHz
Low frequency point - 6dB	43Hz
Sensitivity (2.83V / 1m)	91dB
Nom. impedance	8 Ohms
Minimum impedance	4.2 Ohms
Recommended amplifier power	30 - 150W
Crossover frequency	300Hz / 3000Hz
Dimensions (HxLxP)	35 <sup>3/8"</sup> x 7 <sup>7/8"</sup> x 10 <sup>5/8"</sup> (899x200x270mm)
Net weight	35.6lbs (16kg)

