

QUICKSTART GUIDE

connect

BLUETOOTH® WIRELESS

HEADPHONE SYSTEM FOR TV

Includes Bluetooth Wireless Audio Transmitter
and Matrix3 Wireless HD Headphones

www.MEEaudio.com/T1M3

CONNECT SUPPORT GUIDE



Visit MEEaudio.com/ConnectHelp for
easy-to-follow setup videos, full user manuals,
and the latest troubleshooting information.

MEE audio®
MUSIC ENJOYMENT FOR EVERYONE

connect

BLUETOOTH® WIRELESS

HEADPHONE SYSTEM FOR TV

FOR ADDITIONAL SUPPORT

- View and download complete user manuals for Connect transmitter and Matrix3 headphones at MEEaudio.com/Support
- View our Connect Support Guide at MEEaudio.com/ConnectHelp for easy-to-follow setup videos and troubleshooting information
- Contact us at support@MEEaudio.com

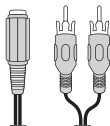
PACKAGE CONTENTS



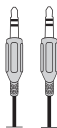
CONNECT
Bluetooth
Transmitter



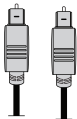
MATRIX3
Bluetooth
Stereo
Headphones



3.5mm to
RCA
adapter



3.5mm
audio
cable



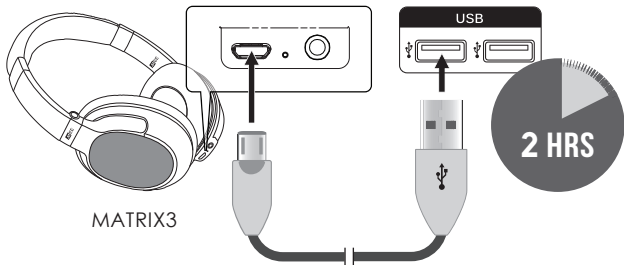
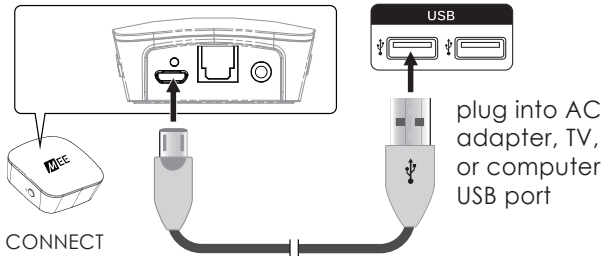
TOSLINK digital
optical S/PDIF
audio cable



2 x Micro-USB
charging
cable

1

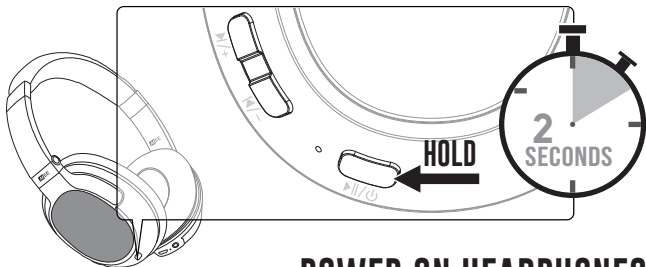
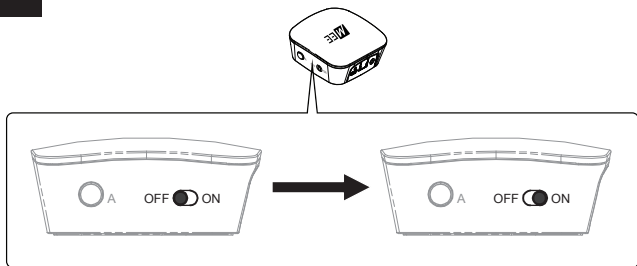
PLUG USB POWER CABLE INTO TRANSMITTER



CHARGE HEADPHONES

2

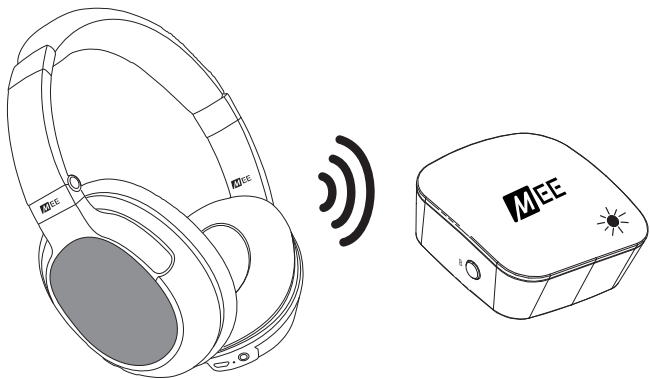
POWER ON TRANSMITTER



POWER ON HEADPHONES

3

CONNECTION IS ESTABLISHED



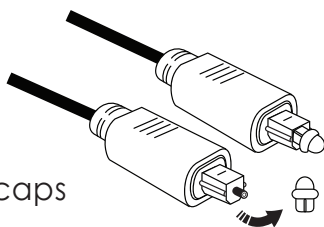
solid blue light on transmitter
indicates connection

**IF NO SOLID BLUE LIGHT, PERFORM PAIRING
PROCEDURE IN STEP 6**

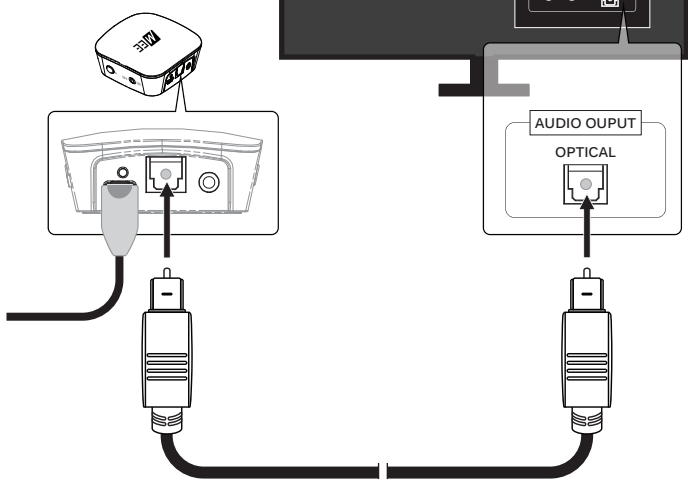
4. CHOOSE AN AUDIO CABLE SUPPORTED BY YOUR TV

OPTICAL S/PDIF [DIGITAL]

remove protective caps

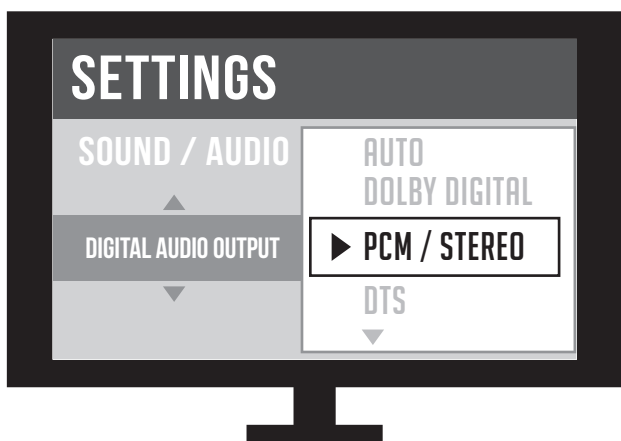


plug the optical cable into TV's digital audio output



IF TV AUDIO PLAYS FROM HEADPHONE, SETUP IS COMPLETE. PROCEED TO STEP 5.

NO SOUND? CHECK TV SETTINGS MENU.†



select "PCM / Stereo" in the audio output settings menu* of your TV

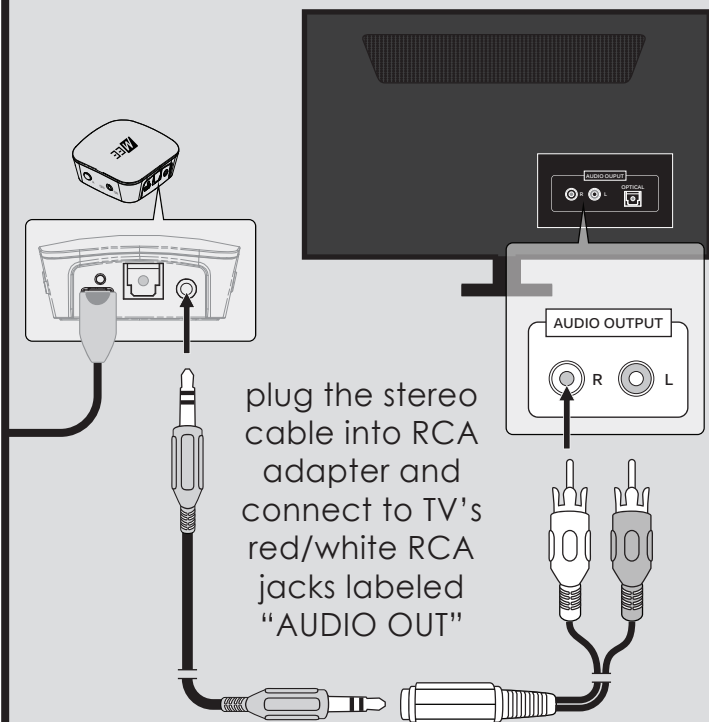
*if sound is still not audible, select "PCM / Stereo" in the audio output settings menu(s) of your video streaming app(s) and/or device(s)

PROCEED TO STEP 5

†EXACT MENU AND ITEM NAMES MAY VARY BETWEEN TVS

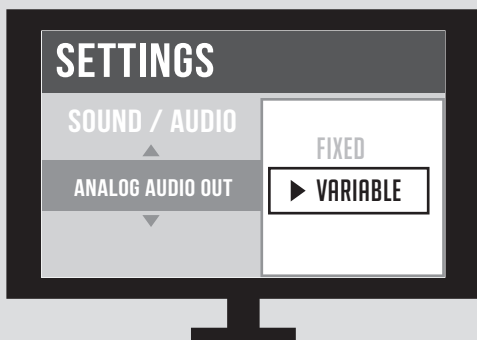
4. CHOOSE AN AUDIO CABLE SUPPORTED BY YOUR TV

RCA

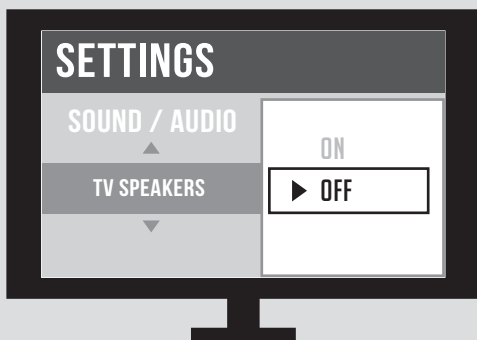


IF TV AUDIO PLAYS FROM HEADPHONE, SETUP IS COMPLETE. PROCEED TO STEP 5.

NO SOUND? CHECK TV SETTINGS MENU.†



select "Variable" in the audio output settings menu of your TV



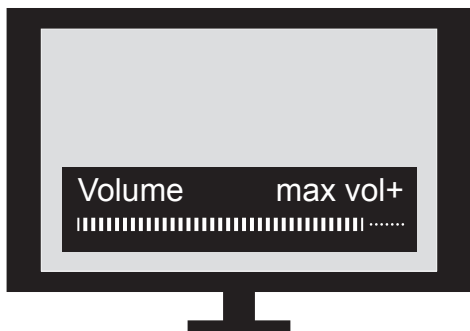
set TV's internal speakers to "OFF"

PROCEED TO STEP 5

†EXACT MENU AND ITEM NAMES MAY VARY BETWEEN TVS

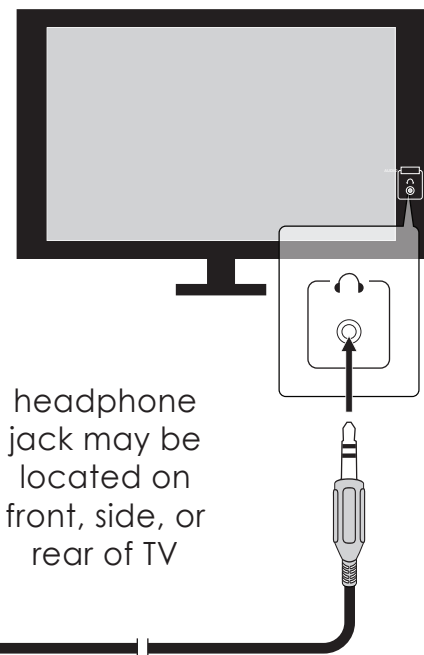
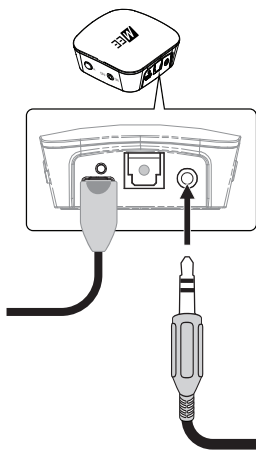
4. CHOOSE AN AUDIO CABLE SUPPORTED BY YOUR TV

3.5MM [HEADPHONE JACK]



maximize the volume on your TV

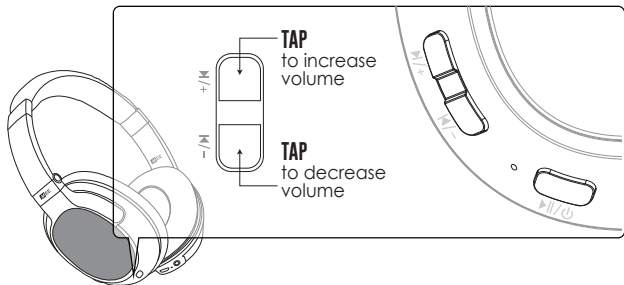
plug the stereo cable into TV's headphone jack



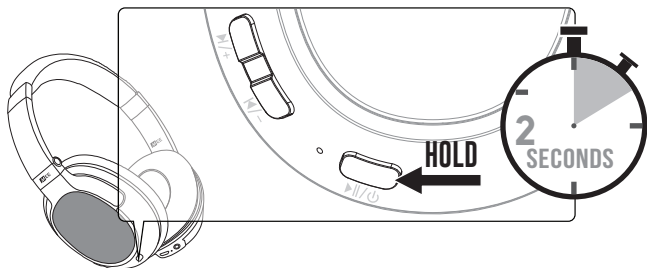
headphone jack may be located on front, side, or rear of TV

5

ADJUSTING HEADPHONE VOLUME



WHEN FINISHED, POWER OFF HEADPHONES UNTIL NEXT USE



POWER OFF HEADPHONES



PAIRING A HEADPHONE

This procedure is used to pair an additional headphone or speaker with the Connect, or to re-pair the Matrix3.

Make sure your Bluetooth headphone or speaker is turned off. Put it in pairing mode. Consult the user manual of the headphone or speaker if you are not sure how to enter pairing mode.

Once the headphone or speaker is in pairing mode, click pairing button "A" located on the side of the Connect (use pairing button "B" when pairing a second headphone or speaker). A blue light will blink rapidly on the top of the unit to indicate that the Connect is ready to pair. Once paired, the light will turn solid blue.

FACTORY RESET/CLEAR MEMORY

The Connect can be reset by holding pairing button "A" for approximately 5 seconds, until the blue indicator light stops blinking. All previously paired devices will be cleared from memory and a new pairing will need to be created by following the procedure in the previous step.

MATRIX 3

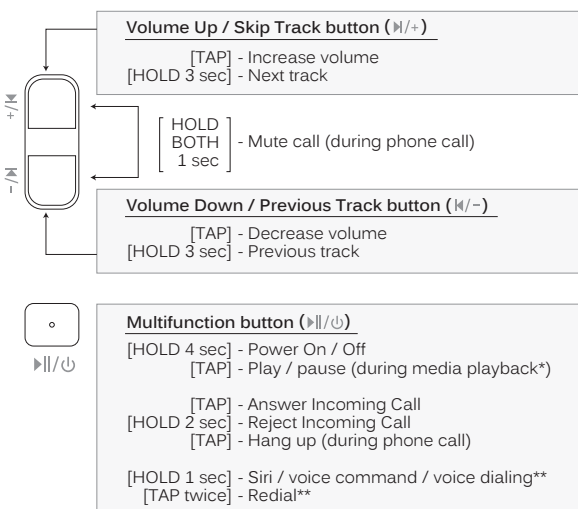
PAIRING WITH OTHER DEVICES

The Matrix3 can be used as a headset when connected to phones and tablets. It will first need to be paired with each device. To pair the Matrix3 with a new device, put it in pairing mode by holding the Power / Multifunction button for about 4 seconds until the status indicator light begins to flash red and blue in an alternating pattern and the headphone says "Ready to Pair".

Open the Bluetooth Settings menu on your device and turn on Bluetooth, Select "Search for Devices" or "Refresh" if your phone or tablet does not automatically search for new devices. Select "MEE audio Matrix3-LL" on the screen of your device and follow any further prompts to pair. Once connected, the status indicator light on the Matrix3 will turn solid blue.

CONTROLS WITH PHONES AND TABLETS

The headphone controls on the Matrix3 are located on the right earcup.



*To start playing music, open a music app on your device and start playback.

**Not all devices support this functionality. For more information, refer to the user manual for your device.

SAFETY AND CARE

- Battery performance will be severely decreased when stored in extreme temperatures: below $-10^{\circ}\text{C}/14^{\circ}\text{F}$ or above $45^{\circ}\text{C}/113^{\circ}\text{F}$ including direct sunlight.
- The lifetime of the battery will be significantly reduced if your device is not charged for a long time. It is recommended to charge your device at least once a month.
- Clean with a soft, slightly damp cloth. Do not use chemical cleaners.
- There are no user replaceable/reparable parts in this device. Disassembling it will void your warranty.
- Do not expose the device to liquids. If the device comes in contact with liquids, quickly wipe away. If submersed in water, do not turn the device on until completely dried.
Note: liquid submersion voids the warranty.
- Do not use around flammable gasses as fire or explosion may occur

WARRANTY

MEE audio products purchased from authorized resellers are covered by a 1-year manufacturer warranty.

For more information,
visit www.MEEaudio.com/Support

WARNING

Using headphones at high to moderate volumes for extended periods of time will result in permanent hearing damage. It is advised you keep volume levels moderate to low at all times for your safety. Do not use while driving a car, cycling, operating machinery, or performing other activities that require hearing surrounding sounds.

Keep the device and packaging out of reach of children.



MEE audio and its logo are registered trademarks of S2E, Inc. All rights reserved.

The Bluetooth® word mark and logos are registered trademarks owned by Bluetooth SIG, Inc. and any use of such marks by MEE audio is under license. Other trademarks and trade names are those of their respective owners.

Qualcomm® aptX™ is a product of Qualcomm Technologies International, Ltd. Qualcomm is a trademark of Qualcomm Incorporated, registered in the United States and other countries, used with permission. aptX is a trademark of Qualcomm Technologies International, Ltd., registered in the United States and other countries, used with permission.

connect

**QUESTIONS?
WE'RE HERE TO HELP!**

Phone Support: 626-965-1008 x31
Monday ~ Friday 9am to 5:30pm PST

Email Support: support@MEEaudio.com
All emails are responded to within 2 business days

