

Mof

ELECTRONICS

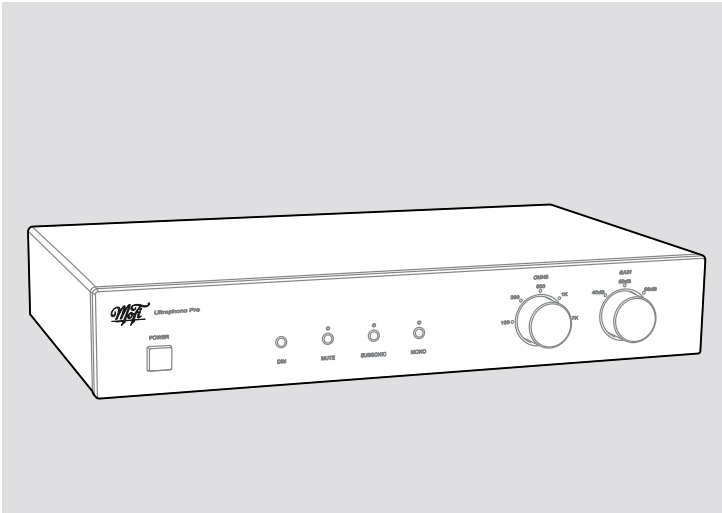
Thank you for purchasing the UltraPhono Pro MM/MC Phono Preamplifier

UltraPhono Pro is designed to extract the maximum amount of sonic information from your turntable, tonearm, and cartridge and to get you as close as possible to the results Mobile Fidelity Sound Lab mastering engineers achieve in the studio.

To accomplish these goals, I leveraged core element of our MasterPhono Preamplifier as well as four decades of hands-on experience in the areas of low-noise, small-signal analog amplification, power supply optimization, and passive filtering. When combined with top-tier playback equipment, UltraPhono Pro proves remarkably faithful to the original source.

Please read through this manual to become familiar with UltraPhono Pro's various features. For additional information, please visit our website.

Happy listening,
Peter Madnick
Lead Audio Products Designer, MoFi Electronics



Important Safety Instructions

⚠ The lightning flash with the arrowhead symbol within an equilateral triangle is intended to alert you to the presence of “dangerous “voltage” inside the product that may constitute a risk of electric shock.

⚠ The exclamation point within the equilateral triangle is intended to alert you to the

presence of important operating and maintenance instructions in the literature accompanying the product.

TO REDUCE THE RISK OF ELECTRIC SHOCK, DO NOT REMOVE THE COVER. NO USER-SERVICEABLE PARTS ARE INSIDE. REFER SERVICING TO QUALIFIED PERSONNEL.

1. Read instructions: Read all the safety and operating instructions before operating this product.
2. Retain instructions: Retain safety and operating instructions for future reference.
3. Heed warnings: Adhere to all warnings on the product and in the operating instructions.
4. Follow instructions: Follow all operating and use instructions.
5. Cleaning: Unplug this product from the wall outlet before cleaning. Use a damp cloth for cleaning. Clean the outside of the product only.
6. Attachments: Do not use attachments that are not recommended by the product manufacturer; they may be hazardous.
7. Water and moisture: Do not use this product near water.
8. Accessories: Do not place this product on an unstable cart or stand. The product may fall, causing bodily injury and damage. Any product and cart combination should be moved with care. Quick stops, excessive force, and uneven surfaces may cause the product and cart to overturn.
9. Ventilation: Slots and openings in the product's cabinet provide ventilation to ensure reliable operation of the product and to protect it from overheating. These openings must not be blocked or covered. This product should not be placed in a built-in installation such as a bookcase or rack unless proper ventilation is provided.
10. Power sources: Operate this product only from the type of power source indicated on the label. If you are unsure of the type of power supply to your home, consult your dealer or local power company. This product is equipped with a three-prong grounding plug. This plug will only fit into a grounded power outlet. If you are unable to insert the plug into the outlet, contact your electrician to replace your obsolete outlet. Do not defeat the safety purpose of the grounding plug.

11. Power-cord protection: Power-supply cords should be routed so that they are

not likely to be walked on or pinched by items placed on or against them.

12. Lightning: Unplug the unit from the wall outlet for added protection during a lightning storm, or when it is left unattended and unused for long periods of time. This will prevent damage to the product due to lightning and power line surges.

13. Overloading: Do not overload wall outlets or extension cords. This can result in a fire or electric shock.

14. Inserting objects into unit: Never push objects of any kind into this product through any openings; they may touch dangerous voltage points or short-out parts that could result in fire or electric shock.

15. Servicing: Do not attempt to repair or service this product yourself. Opening or removing covers may expose you to dangerous voltage and other hazards. Refer all servicing to qualified service personnel.

16. Damage requiring service: Unplug this product from the wall outlet and refer servicing to qualified service personnel under the following conditions:

A) If the power-supply cord or plug is damaged.

B) If liquid has been spilled into the product.

C) If the product has been exposed to rain or water.

D) If the product does not operate normally by following the operating instructions.

E) If the product has been dropped or damaged in any way.

F) If the product exhibits a distinct change in performance.

17. Replacement parts: When replacement parts are required, be sure the service

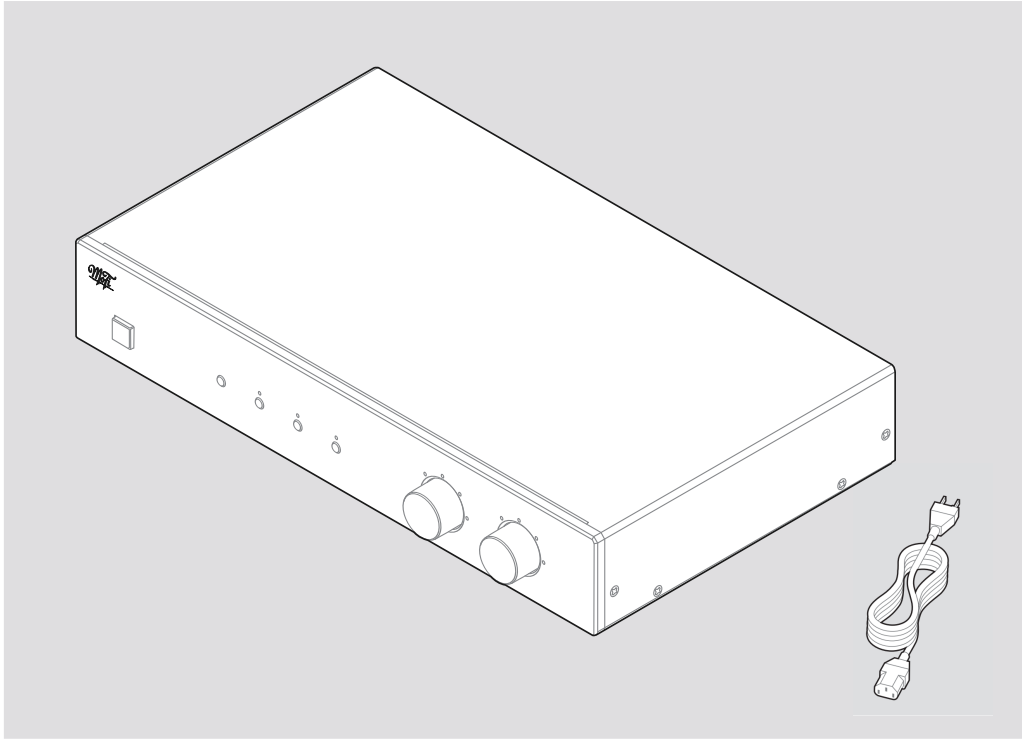
technician uses replacement parts specified by the manufacturer. Unauthorized substitutions may result in fire, electric shock, and other hazards.

18. Safety check: Upon completion of any service or repairs to this product, ask the service technician to perform safety checks to determine that the product is

in proper operating condition.

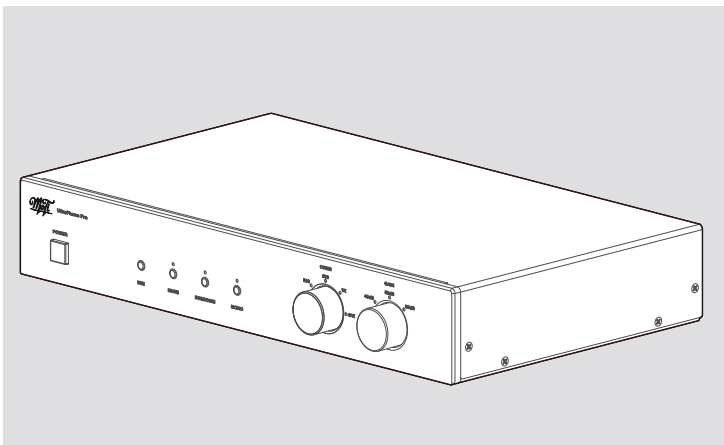
19. Wall or ceiling mounting: Mount the product to a wall or ceiling only as recommended.

20. Heat: The product should be situated away from heat sources such as radiators, heat registers, stoves, and other products (including amplifiers) that produce heat.



In the Box

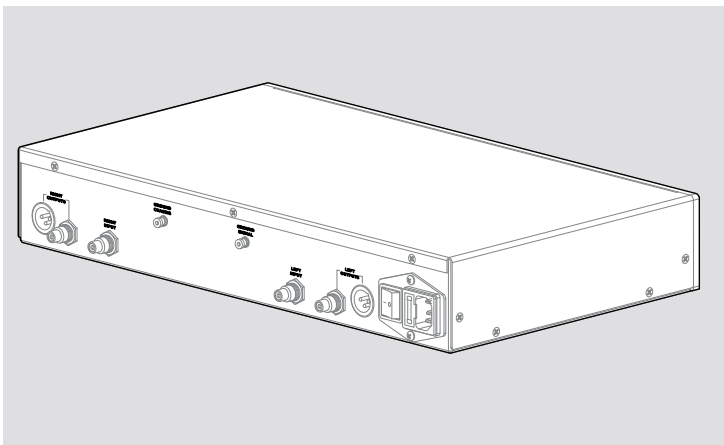
1. Phono preamplifier
2. Power cord

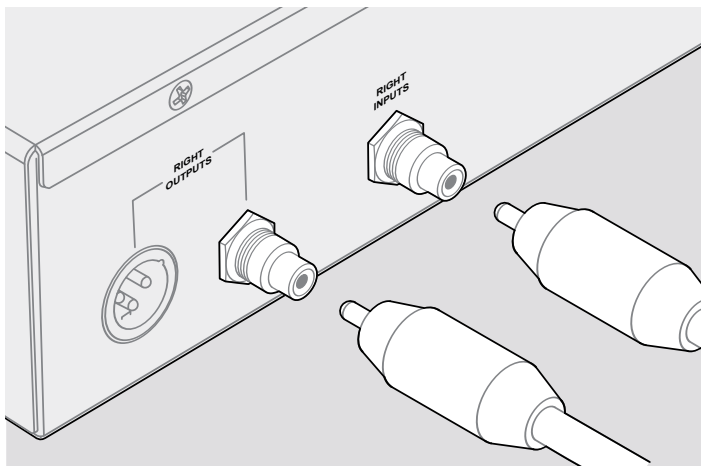
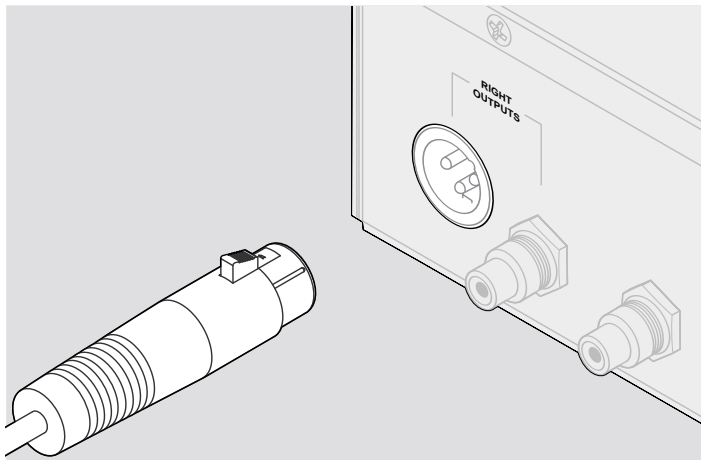


Installation

⚠ Check all connections before you plug in the power cord or turn on the main system.

UltraPhono Pro will operate at its best when properly installed in a location free from magnetic fields such as those generated by equipment with power transformers (for example, amplifiers), and within a reasonable distance between your turntable and audio component(s).



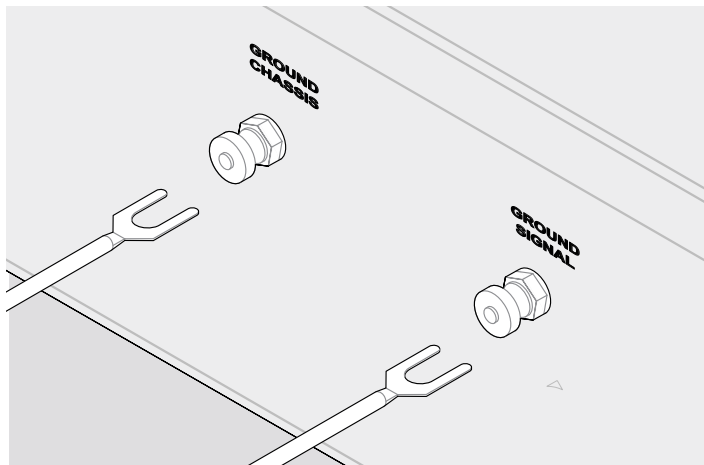


Connecting Inputs and Outputs

XLRs are recommended for optimal performance. Connect the UltraPhono Pro outputs to the inputs on your preamp.

Connect your turntable's output to a UltraPhono Pro input as recommended (see below).

The input on UltraPhono Pro is designed for all types of moving coil (MC), moving iron (MI), and moving magnet (MM) cartridges.



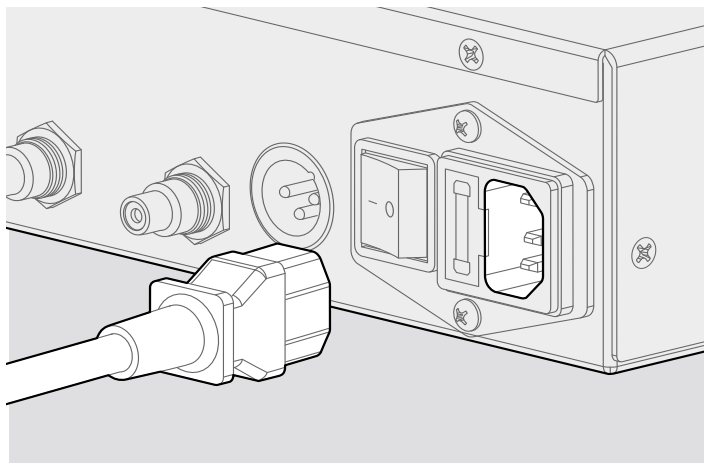
Connecting the Ground and Power Cord

▲ To protect your system, make sure the volume of your main system is turned down.

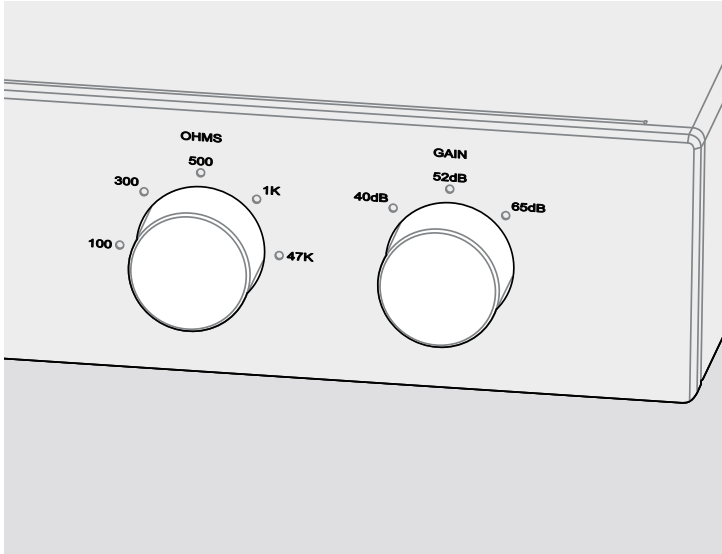
The chassis ground is used to ground turntables with a single ground or to ground the motor and plinth on turntables with multiple grounds.

The signal ground is used to ground your turntable's tonearm.

Connect the power cord from the UltraPhono Pro mains input to the outlet on your power conditioner or mains outlet.

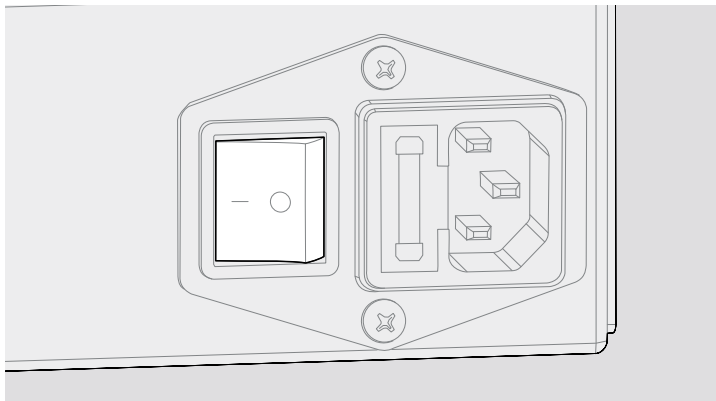


Setting Ohms and Gain



Ohms Selection: For most MM cartridges, 47k is the recommended loading setting. For MC cartridges, refer to the cartridge manufacturer's recommended load and select the ohms setting that most closely matches the specified load for your cartridge.

Gain Selection: You can choose 40db (most MM), 52db(low output MM, high output MC), or 65db (most MC). For lowest noise, use the minimum gain setting possible to achieve sufficient volume for your listening preferences.



Basic Operation

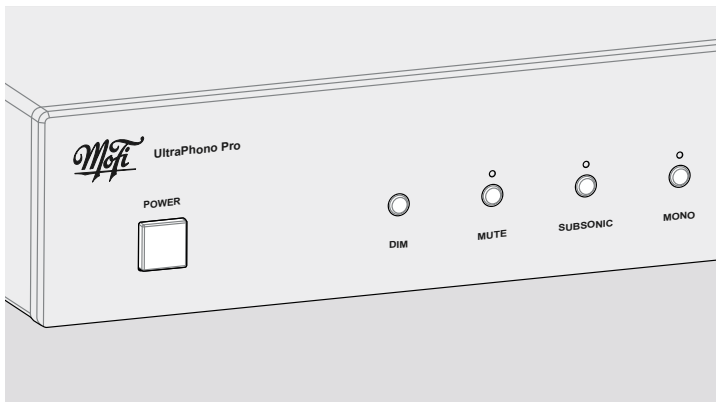
The main power switch is located on the rear panel, just above the power cord outlet. “O” is off; “I” is on. UltraPhono will remain in standby mode until switched on by activating the Power button on the front panel.

Adjust the LED backlight by repeatedly pressing the DIM button to achieve the desired brightness.

The Subsonic button filters acoustic feedback (a.k.a., howling) that occurs when the system’s bass response shakes your turntable. If this function is needed often, you should relocate your turntable.

The Mono button is for mono cartridges or for listening in mono mode.

Mute the device by pressing the Mute button. The LED will stay on when UltraPhono Pro is muted.



Troubleshooting

Problem: UltraPhono Pro does not power on.

Possible Solutions:

Make sure the main power switch and front standby is off.

Tighten the power cord; it might be loose.

Try a different outlet.

Check the fuses. First, remove the power cord. Then, check the fuse in and replace it with one of the two included spare fuses (in the drawer located above the power-cord receptacle) if needed.

Problem: No sound.

Possible Solutions:

Check your cables, connections, and turntable.

Make sure Mute is off.

If everything seems in order, contact your dealer.

Problem: The lights are too bright or too dim.

Possible Solutions:

Adjust the brightness of the LED by pressing the DIM button until you are satisfied with the illumination level.

Problem: Hum, buzz, or hiss.

Possible Solutions:

Though the recommended grounding setup is usually the most quiet, other setups may perform better with your system.

Check to ensure the UltraPhono Pro along with the RCA and/or XLR cables, are routed away from the power transformers in your other products.

Ensure that the RCA and XLR cables are not near or running parallel to power cords.

UltraPhono Feature List

- Standard signal input via RCA
- Five-position loading adjustment
- Fully discrete from input to output
- Single-ended RCA and balanced XLR outputs
- Switchable gain (40db/52db/65db)
- Passive RIAA with NOS polystyrene and polypropylene film/foil capacitors for better than 1% precision
- All critical resistors are 0.1% or 0.5% tolerance for precise filtering and voltages
- Stereo and mono modes
- Subsonic filter
- Ultra-low-hum field power supply
- Isolated chassis and signal grounding post for low-overall system noise
- Cascaded voltage-regulation stages for lowest noise

UltraPhono™ - Specifications

Inputs:	RCA jack, voltage mode, single-ended
Loading:	Resistive set via front-panel knob
Ohms Options	100 Ohms, 300 Ohms, 500 Ohms, 1k Ohms, 47k Ohms
Gain	RCA output: 40db, 52db, 65db Balanced output: 46db, 58db, 71db Set via front-panel knob
Output Impedance	Balanced: 230 Ohms, Unbalanced: 115 Ohms
Maximum Output	Maximum Output @1% THD, 10 Volts RMS
THD	110mV@1kHz 40db gain: 0.005% A-Weighted 10mV@1kHz 65db gain: 0.005% A-Weighted 1mV@1kHz 40db gain: 0.010% A-Weighted 1mV@1kHz 65db gain: 0.013% A-Weighted
RIAA Accuracy	+/- 0.05db
Frequency Response	10Hz - 50kHz +/- 0.20db
S/N ratio (20Hz-20KHz)	Balanced 40db gain: 82db, 93db A-Weighted Balanced 65db gain: 78db, 85db A-Weighted RCA 40db gain: 75db, 83db A-Weighted RCA 65db gain: 69db, 75db A-Weighted
Chassis size:	17"W x 2.0"H (no feet, 2.5"w/feet) x 9.875"D (chassis only) 11.375" (w/ knobs and jacks)
Weight:	7lbs.
AC Mains:	100VAC - 260VAC, auto switching

Mofi ELECTRONICS

www.mofielectronics.com